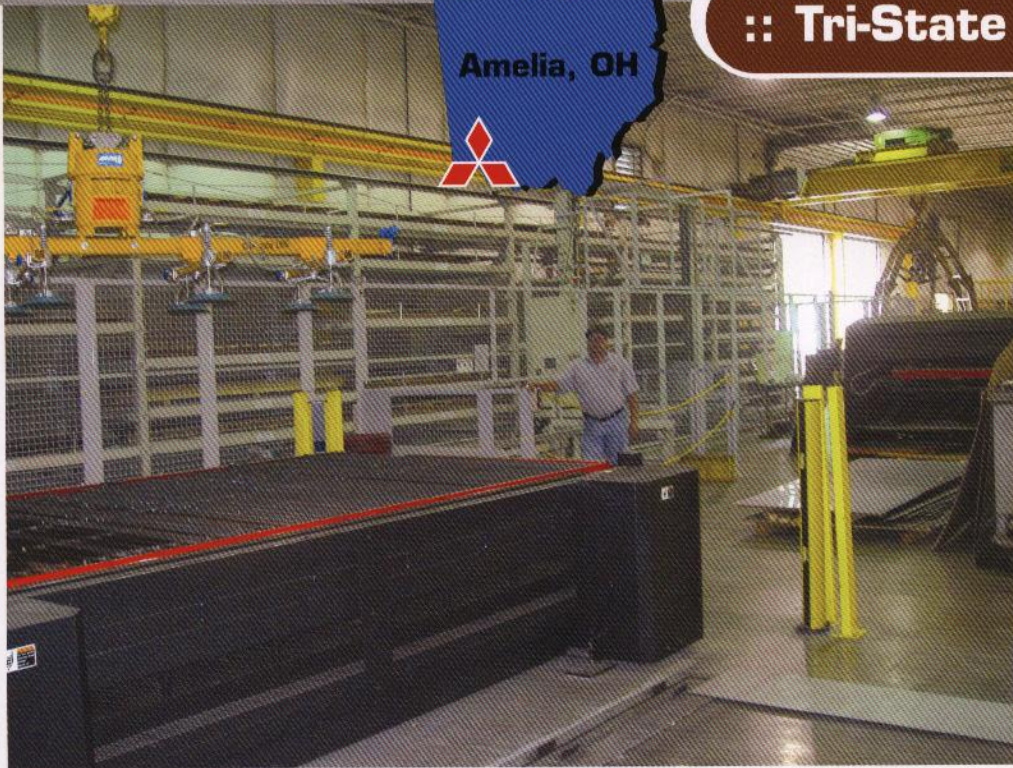




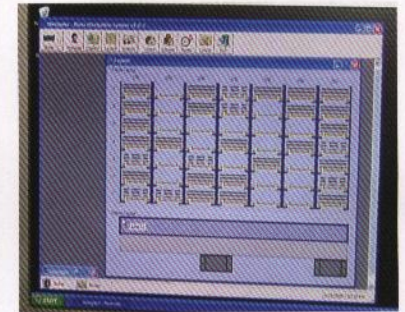
**:: Tri-State Fabricators, Inc.**



*The River System provided the material-handling solution Tri-State needed.*



*Tri-State Fabricators operates from this 125,000 square-foot facility near Cincinnati.*



*The River System's software has also eliminated Tri-State's inventory tracking problem.*

## River System Eliminates Inventory and Material-Handling Problem

Since its establishment, Tri-State Fabricators has grown from a 10,000 to 125,000 square-foot facility. Jay Richard Vogt founded this Cincinnati-based fabricating and finishing shop in 1983. According to VP of Sales Rick Vogt, the company's success comes from offering a wide range of services for fast turnaround and excellence in quality control.

"We used to order raw material from local steel service centers on a per-job basis," explains Rick. "But the steel industry has seen dramatic cost increases and availability decreases in recent years." To combat these rising costs, the purchasing manager began buying steel and raw materials when available at a good price and storing them for future jobs.

This led to a major inefficiency in production: the money being saved by pre-purchasing materials was being sacrificed in the labor cost of shifting through them on the shop floor. "Suddenly, we had multiple piles of steel everywhere, stacked seven or eight bundles high and were spending up to

an hour per job maneuvering bundles just to get to the material we needed," recalls Rick.

Inventory tracking became another obstacle for Tri-State. The company had no system in place to track material types or quantities in stock. Every time a new job was quoted, someone was physically going onto the floor to look for specific gauges. It was very inefficient.

"We needed a material-handling solution," Rick says. The River Navigation System distributed by MC Machinery Systems provided Rick and his partners, brothers Chris and Jeff Vogt, with all the answers they were looking for. Designed to automate material handling, the River System boosts productivity without increasing labor. "It wasn't a hard sell when our Mitsubishi rep told us it would move 4,400 lbs. of steel from the farthest shelf to the operator in less than three minutes," he says.

"And, the River System's software has eliminated our inventory problem," he continues. "It gives us a very organized and

efficient way of monitoring our stock." The system handles and inventories sheet metal, enabling 24/7 material tracking and improving Tri-State's overall flow of materials and information.

Tri-State's River System has 7 shelves with 7 pallets on each. Pallets hold up to 4,400 pounds of raw material and maximum sheet size of 60x120 inches. "Now, we order material in loads that weigh no more than 4,400 pounds so we can enter them in the system and move them onto shelves in practically no time," says Rick.

"Now we know immediately what we have in stock," he states. "The system was just installed in May, but it's had an obvious effect on our production costs and overall work flow. It hasn't eliminated jobs, its two load/unload stations have helped us reallocate our time for maximum processing. The volume of work we're able to move through now is incredible."



For more information on the River System, visit [www.rivermfc.com](http://www.rivermfc.com)